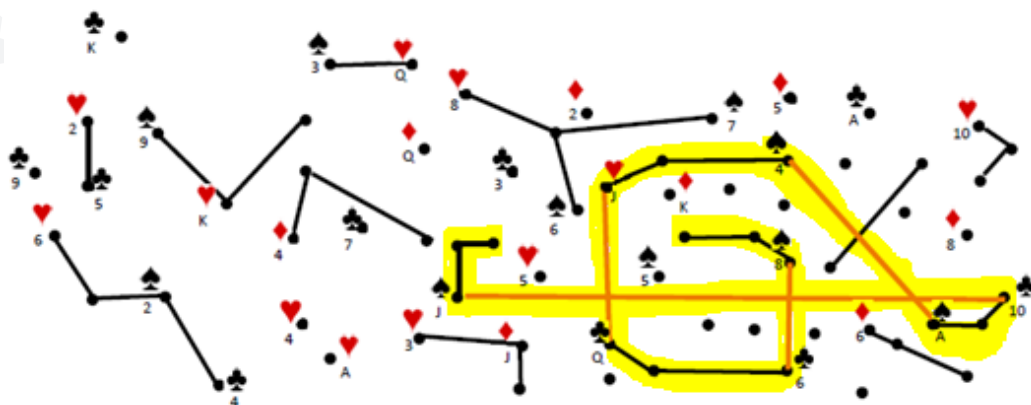
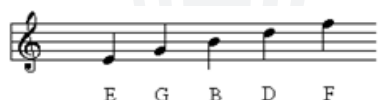


# Please Don't

By: Lucy Liang and Kevin Luecke

The connected dots form a treble clef. Rotate the page 90 degrees counter-clockwise, and the circled cards form the notes of the treble clef.



1) The Tanner kids aced their exams because they always ate their breakfast. (**Full house, aces full of eights**)

2) For the sake of that forgotten family, Fran footed for a fortnight. (**Four fours**)

3) The loving royal family was flushed at the sight. (**Royal flush of hearts**)

4) This prompted the warring kings and queens to forget their differences and get hitched. (**2 pair, kings and queens**)

5) Starting with too many golden rings, so they shoveled straight to hell. (**Spade straight starting with a 5**)

6) Where they met the DEVIL! (**Three sixes**)

7) But he was chill, so they all went clubbing! (**Club flush**)

8) Jack and Jill were there I think; no one really cares about them though. (**A pair of jacks**)

High E	Low G	B	D	F

F E E D M Y D O G B E E T S

This memo is confidential and for internal distribution only.  
Failure to comply will be prosecuted by the Nevada Puzzle Board to the fullest extent of the law.