

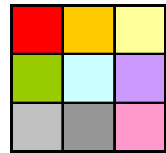
## Taj Mahal

Built in Agra, India between 1630 and 1653, Taj Mahal serves as a symbol of India that every person recognizes. Originally commissioned by the Mughal Emperor Shah Jahan, the complex is comprised of five sections: the gateway, the garden (or *charbagh*), the mausoleum, the guest house (or *mihman khana*) on its left, and the mosque on its right. Four minarets stand at each corner of the terrace to complete the distinctive appearance.

## A Sudoku-Like Puzzle

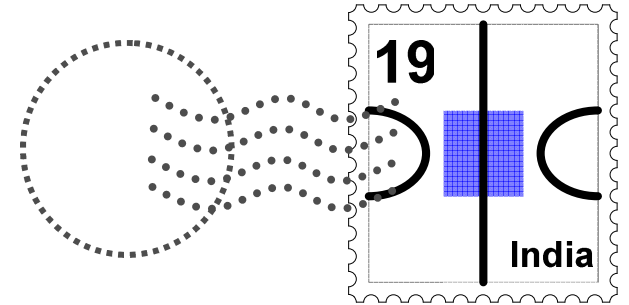
A sudoku-like puzzle. Use the letters A, C, E, H, I, S, T, U, and X  
For the shaded squares, cells with the same color hold the same value.

			C	T		X	I	
							T	
			A			U		
I						E	X	
A	X		I			H		



H	E	U				X		
C		X	I			H	U	
T		I		X	U			
	C	E		A	T	S		H

Answer:



*Sr. B. B. Ramirez*

*Sant Antoni, 12-3*

*12345-Madrid*

*Spain*