

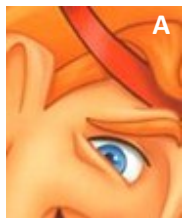
# Solution to We Pairs Are Ready For Our Close-ups

By Katie Flinn

Find each pair of characters that share a movie and swap those letters to solve the cryptogram. Hint: **HAS CRAB**.

A ↔ O	E ↔ Q	I ↔ X	N ↔ K	R ↔ F	V ↔ H
B ↔ W	F ↔ R	K ↔ N	O ↔ A	S ↔ D	W ↔ B
C ↔ P	G ↔ T	L ↔ Y	P ↔ C	T ↔ G	X ↔ I
D ↔ S	H ↔ V	M ↔ U	Q ↔ E	U ↔ M	Y ↔ L

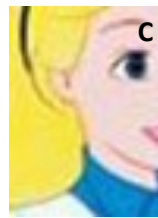
ALL CHARACTERS HAVE A NAME  
BUT NOT ALL TITLES  
FIRST LETTERS FROM THOSE THAT DO  
HINT AT THIS MOVIE



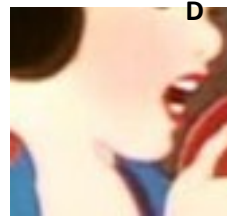
Hercules  
(Hercules)



Duchess  
(Aristocats)



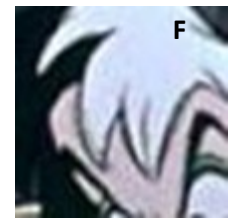
Alice  
(Alice In  
Wonderland)



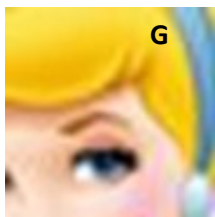
Snow White  
(Snow White and  
the Seven Dwarfs)



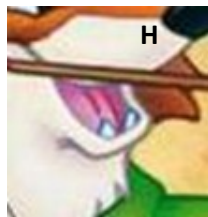
Mowgli  
(The Jungle  
Book)



Cruella  
(101  
Dalmations)



Cinderella  
(Cinderella)



Robin Hood  
(Robin Hood)



Aladdin  
(Aladdin)



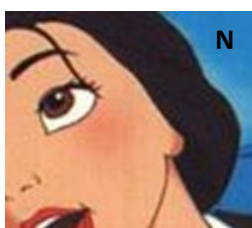
Gaston  
(Beauty and the  
Beast)



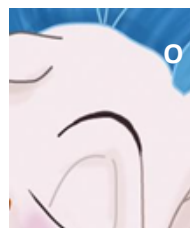
Bambi  
(Bambi)



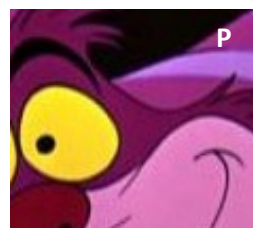
Shenzi  
(The Lion  
King)



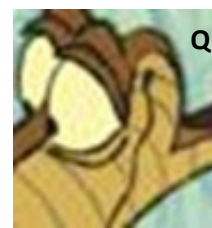
Belle  
(Beauty and  
the Beast)



Pegasus  
(Hercules)



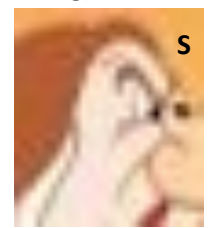
Cheshire Cat  
(Alice In  
Wonderland)



Kaa  
(The Jungle  
Book)



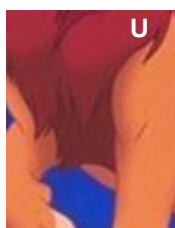
Pongo  
(101  
Dalmations)



Grumpy  
(Snow White and  
the Seven Dwarfs)



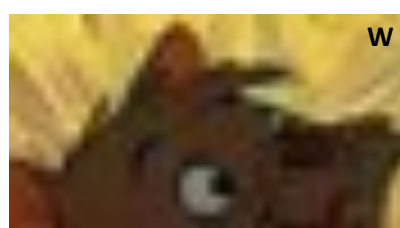
Fairy  
Godmother  
(Cinderella)



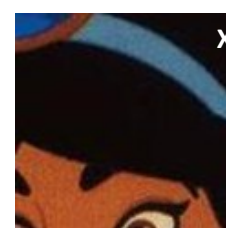
Simba  
(The Lion  
King)



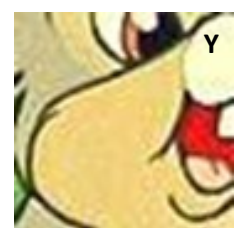
Prince John  
(Robin  
Hood)



Berlioz  
(Aristocats)



Jasmine  
(Aladdin)



Thumper  
(Bambi)

THE LITTLE MERMAID